

The background features several decorative elements: a horizontal blue bar at the top with a circle split vertically into dark and light blue; a vertical blue bar on the right with a circle split horizontally into dark and light blue; a vertical blue bar on the left with a circle split horizontally into dark and light blue; and a central blue circle split vertically into dark and light blue.

the **meeting** pod .co.uk

outdoor orb pod technical specification



standard specification outdoor orb pod

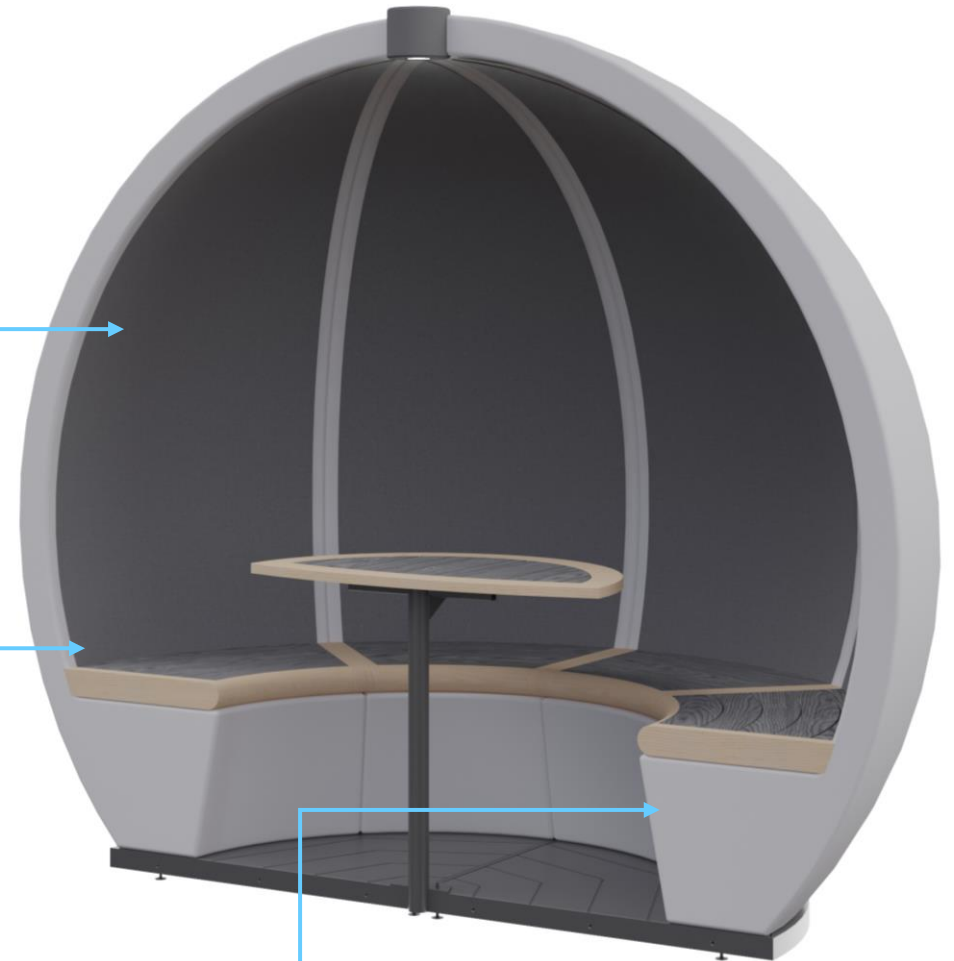


Composite deck board lining- Eco-friendly deck board linings that are made out of composite & combined with 100% recycled plastic- extremely hard wearing and very gentle on the environment.



Iroko Wood Trim- This wood is tough, dense, and very durable.

Shells- Constructed from white recycled resin, typically 1800 bottle tops makes up a 4 person pod. Our choice for white stems from its resistance to discolouring.



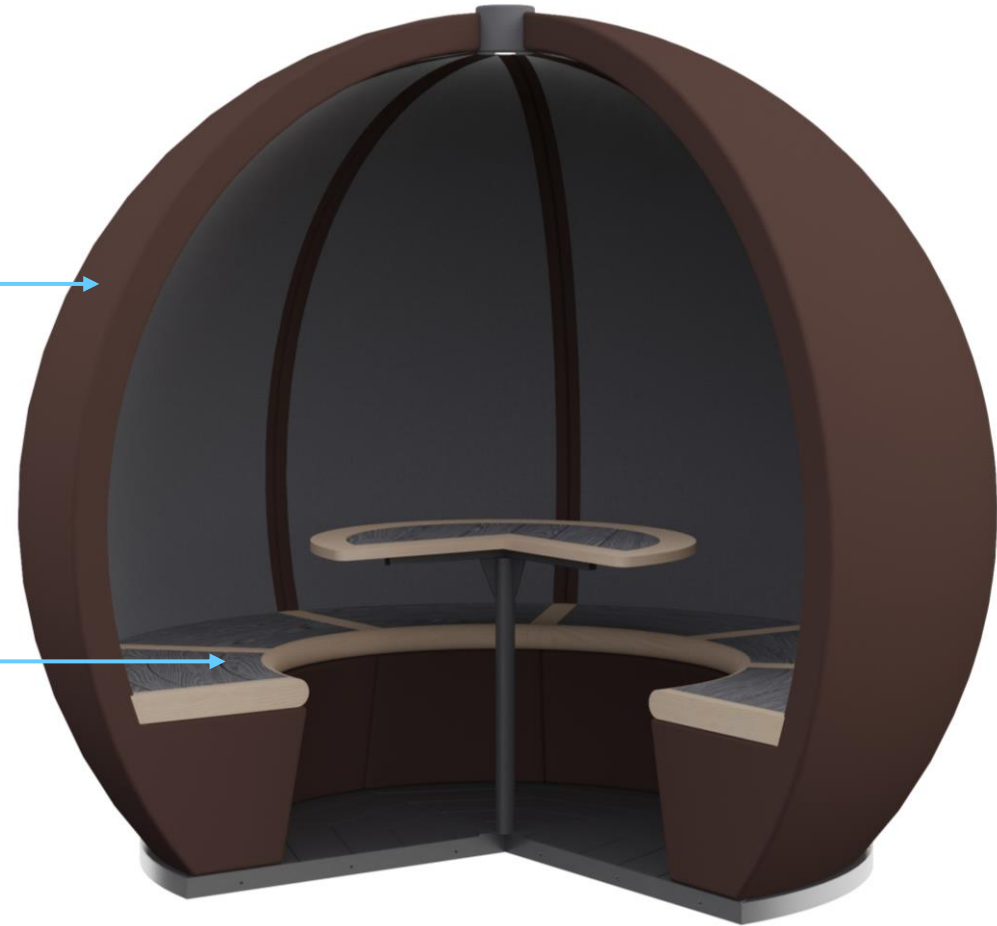
bespoke options

External options:

- Change in pod shell colour to any RAL chart colour
- Vinyl wrapping
- Biophilic wrapping
- Wood cladding

Deck board options:

- Premier Brown
- Premier Mocha
- Premier Charcoal
- Premier Silver



power options



● standard lighting

Infrared sensor switch. LED cable lighting with adjustable spotlight heads, using 85% less energy and lasting up to 20 times longer than incandescent bulbs.



● solar power

12v solar panel available with open and part enclosed pods. 2 x USB charging ports fit within seat base.



● warranty

A five year warranty is supplied on the composite structure of the meeting pods covering normal use for the purposes of meetings. In addition the benefit of any manufacturers' warranty given by a third party supplier of Goods will be assigned to the Buyer. No liability will be accepted for any defect arising from fair wear and tear, wilful damage, negligence, misuse, alteration or repair without the Seller's approval in writing.

dimensions & weights

4 person escape pod

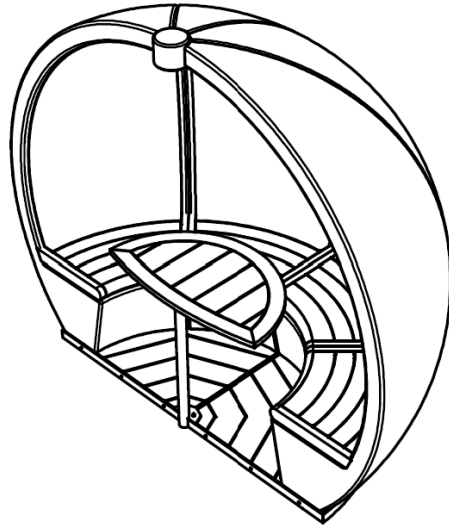
L1250mm x W2500mm x H2100mm

Structure, decking board fit out & seating= 100kg

Table & leg= 32kg

Solar panel & lights= 11kg

Flooring= 37kg



6 person escape pod

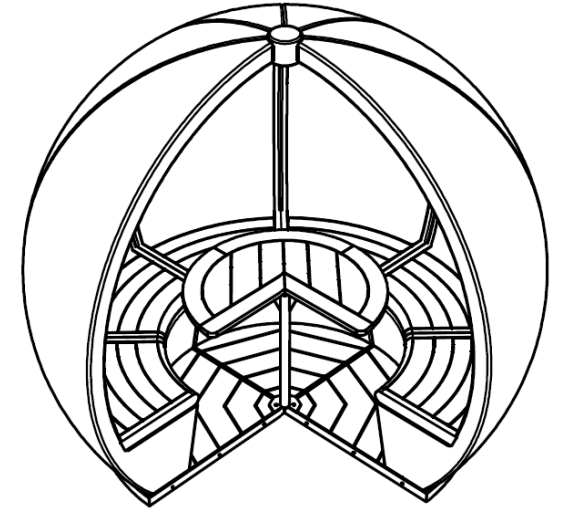
L2500mm x W2500mm x H2100mm

Structure, decking board fit out & seating= 150kg

Table & leg= 48kg

Solar panel & lights= 11kg

Flooring= 56kg

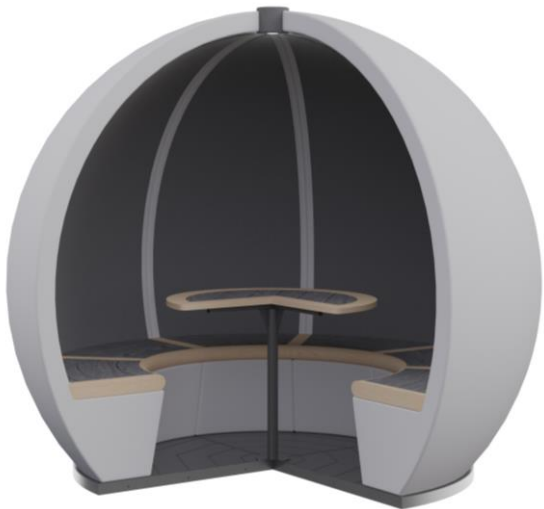


installation information

installation hours



4 person pods- up to 2 hours



6 person pods- up to 4 hours

installation requirements

- Local parking
- Access information to installation site
- Completion of pre-installation questionnaire
- Confirmation if site induction required



remarkable design


Our in-house design team work to achieve design that deliver statement pieces in any workplace or home environment combined with a functionality that makes our products a joy to work from

exceptional quality

Our production team recognise quality sits alongside consistency, so we must be proud of every product that is manufactured by us

sustainability

From design, engineering, material sourcing, transportation and support, all aspects of our manufacturing continuously evolve to minimize negative environmental impact. Our 4 person Meeting/Outdoor Pod shell's composite resin has been sourced from a recycled material that is made up from 1800 plastic bottle tops



our story

expansion

Our first business move was from a 450 square foot workshop to a fully operational 3500 square foot industrial facility

a bit of home

Inspired by the yachting location, the pods adopted high quality composite materials associated with the Isle of Wight boat building industry

product growth

In 2019, after much demand, the first outdoor pod product was designed and brought to market

the meeting pod co was born

In 2016 Tom's unique curved design received unanimous praise from Mike's staff and clients and so The Meeting Pod Co Ltd was established

the pandemic

The 2020 pandemic stimulated an explosion in global demand for outdoor pods with completed projects in the US, Europe & Middle East

how it started

Mike, the CEO of a successful research agency, couldn't find a suitable meeting pod for his business, so he commissioned Tom (his carpenter son-in-law) to build one

our success

In 2021 following rapid growth we moved into the latest 10,000 square foot manufacturing facility, which houses a workforce of 25 people.



the **meeting pod**.co.uk
London Showroom

Finsbury Business Centre, 40 Bowling Green Lane,
London, EC1R 0NE

Please feel free to visit our London showroom where we have a range of indoor and outdoor pod on display. We will be pleased to provide more information and answer any questions.

Visit by appointment with
Mollie on: 07879 255516